

FB Stitch-Bonding Machine

1. Application

FB stitch-bonding machine is kind of fibre web -- stitching yarn stitch-bonding machine, applying in stich knitting loose or pre-sewing fiber web of ground fabric. No matter what kind of materials, thickness and weight are available. It can consolidate fibre web mechanically. Its products are suited for garment materials, lining fabric, home decoration, geotextile, textile for medical treatment, insulating material and so on. With feeding different auxiliary materials, it can meet customer's special requirements of products.

2. Working Environment

Manufacturer should make sure enough space, room temperature is 25 centigrade (plus or minus 2 centigrade), air humidity can't exceed 65%. Machine can't be exposed to sunlight directly. Standing place should be flat and can guarantee enough supporting capacity.

3. Product Configuration List

Item No.	Name	Specification
1	Needle type	compound needle (block needle type)
2	Machine number	5, 7, 9 (stitch/25mm) etc.
3	Work width	3400 (mm)
4	Stitch length	0.5~5.5mm
5	Main drive	Eccentric gear
6	Pattern device	Cam
7	Looping part	1 groove needle bed, 1 core needle bed, 1 sinker needle bed, 1 guide needle bed
8	Beam mechanism	one bar beam shaft
9	Main motor power	5.5 KW
10	Frequency power	5.5 KW
11	Total equipment power	9KW
12	Speed	10-1300 RPM
13	Yarn Feeding	available max 21" beam

14	Let-off device	1 bar EBA
15	Pattern mechanism	Cam
16	Draw-off device	EAC
17	Batching device	Individual electronic batching device
18	Electric installation	three-phase alternating-current supply 380V/50hz, frequency control of motor speed
19	Dimension	4334*4110*2376MM

4. Accessories Instructions:

1. Free parts for install and debug the machine

Item No.	Name	Quantity
1	Groove needle block	5 pcs
2	core needle block	5 pcs
3	Sinker needle block	5 pcs
4	Separating needle block	5 pcs
5	Tool box	1 set

2. No warranty accessories

Item No.	Name
1	Groove needle block
2	core needle block
3	Sinker needle block
4	Separating needle block

3. One year warranty accessories:

Item No.	Name
1	Synchronous belt of Encoder
2	Synchronous belt of Let-off system

5. Electrical attention:

1. Main motor is driven by three-phase current at variable speed.
2. Electric equipment abides by EN60204 (machine security) and VBG4

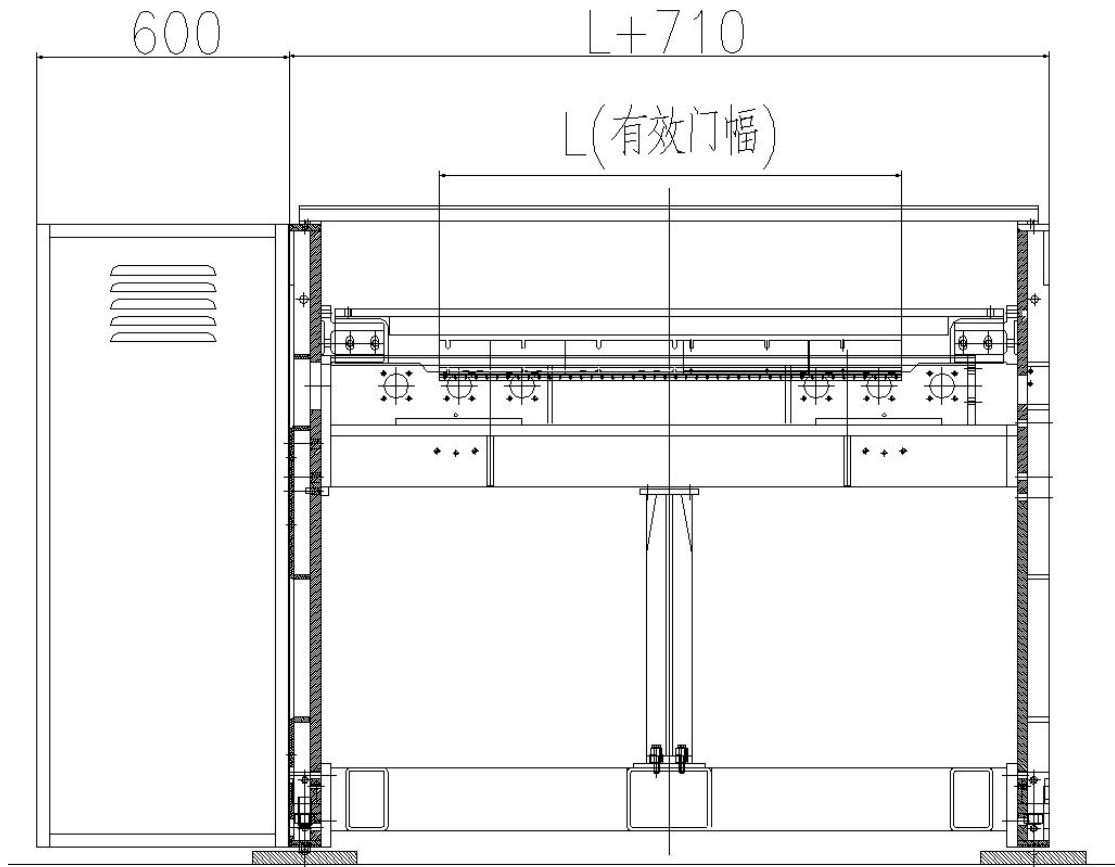
(supervising accidents prevented).

3. Operating interface system is self-developed.
4. Customer using voltage: 400V ($\pm 10\%$), third level/ Neutral conductor/ ground connection, 50Hz.
5. Main fuse and main power can meet with the requirements of the operating instructions.
6. Customers should make sure the machine has connected with grounding protection to avoid the leakage current.
7. Customer should be informed if machine is connected to the public low-voltage power supply.

6. Declaration:

1. The warranty period of machine is one year from the date of acceptance check, not including the vulnerable parts. But our company will receive repaired fee if the damage is made by user misuse.
2. The warranty is not including the damage of irresistible natural disasters, fire and other accidents.

7. Machine dimension:



Note: $L=3400\text{mm}$

